

*Introducing the .....*

***FLEX-MATE***® *\$500*

# Flex-Mate S500

- Shoulder CPM
  - PASSIVE ELEVATION
- Motorized Rope & Pulley
  - Skin Traction
- Portable
- Easy to Set Up
- Easy to Operate
- Anatomic
- Functional



# Portable

- Folded Position
- Easy Transportation
  - Wheels
  - Handle
  - Fits in Standard Trunk
  - Weight: 33#

Wheels



Handle

# Set Up

- Fold Down Legs
- Raise Top
- Plug in
- Place Controller
- Press Start/Stop to Lower Tape
- Attach Soft Goods



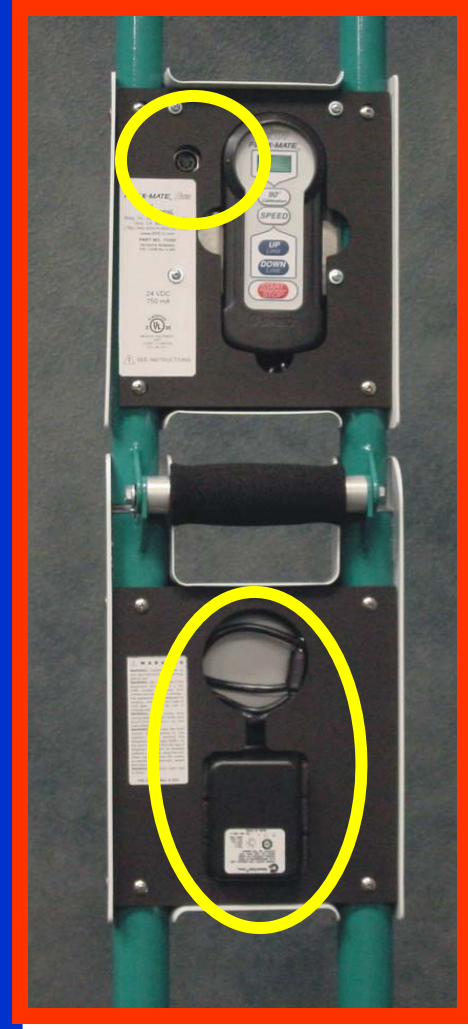
# Set Up

- Fold Down Legs
- Raise Top
- Plug in
- Place Controller
- Press Start/Stop to Lower Tape
- Attach Soft Goods



# Set Up

- Fold Down Legs
- Raise Top
- Plug in
- Place Controller
- Press Start/Stop to Lower Tape
- Attach Soft Goods





# Set Up

- Fold Down Legs
- Raise Top
- Plug in
- Place Controller
- Press Start/Stop to Lower Tape
- Attach Soft Goods



# Set Up

- Fold Down Legs
- Raise Top
- Plug in
- Place Controller
- Press Start/Stop to Lower Tape
- Attach Soft Goods





# Set Up

- Fold Down Legs
- Raise Top
- Plug in
- Place Controller
- Press Start/Stop to Lower Tape
- Attach Soft Goods



# Set Up

- Fold Down Legs
- Raise Top
- Plug in
- Place Controller
- Press Start/Stop to Lower Tape
- Attach Soft Goods



# Operation



# Operation

- Calibration
  - 90 Degrees Shoulder Elevation
  - Press Calibration
- Up Limit
- Down Limit
- Start/Stop
- Adjust Speed & ROM as Needed



# Operation

- Calibration
  - 90 Degrees Shoulder Elevation
  - Press Calibration
- Up Limit
- Down Limit
- Start/Stop
- Adjust Speed & ROM as Needed





# Operation

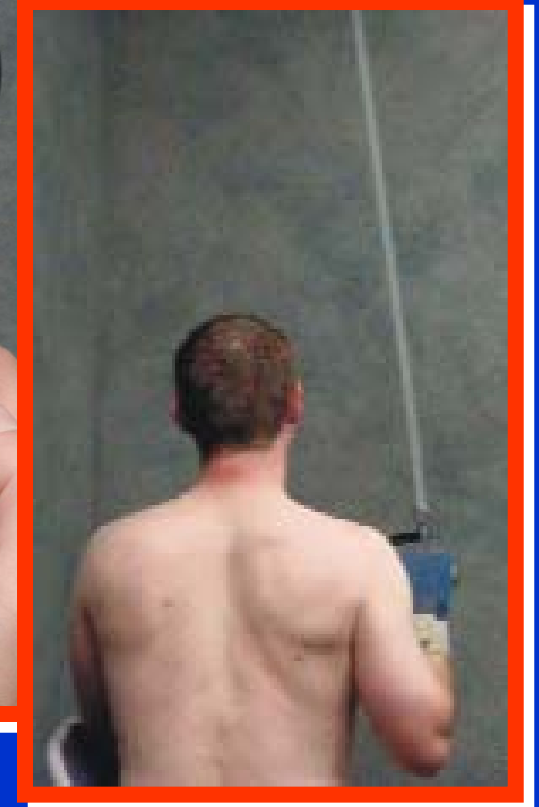
- Calibration
  - 90 Degrees Shoulder Elevation
  - Press Calibration
- Up Limit
- Down Limit
- Start/Stop
- Adjust Speed & ROM as Needed





# Operation

- Calibration
  - 90 Degrees Shoulder Elevation
  - Press Calibration
- Up Limit
- Down Limit
- Start/Stop
- Adjust Speed & ROM as Needed



# Operation

- Calibration
  - 90 Degrees Shoulder Elevation
  - Press Calibration
- Up Limit
- Down Limit
- Start/Stop
- Adjust Speed & ROM as Needed



# Operation

- Calibration
  - 90 Degrees Shoulder Elevation
  - Press Calibration
- Up Limit
- Down Limit
- Start/Stop
- Adjust Speed & ROM as Needed



# Operation

- Calibration
  - 90 Degrees Shoulder Elevation
  - Press Calibration
- Up Limit
- Down Limit
- Start/Stop
- Adjust Speed & ROM as Needed



# *Anatomic Motion*

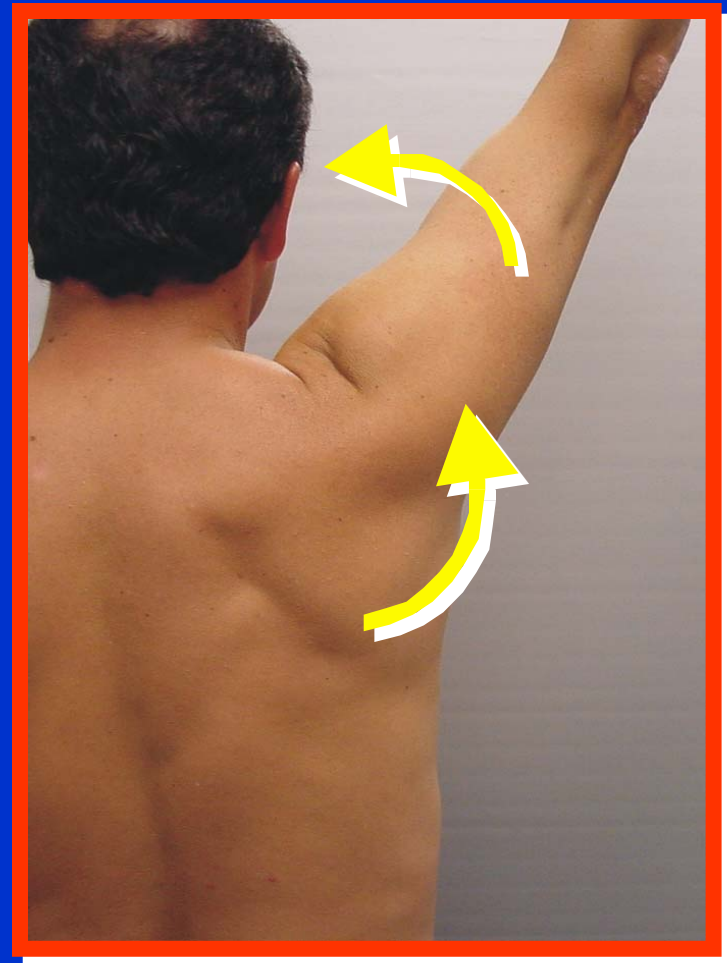
# Shoulder Motion



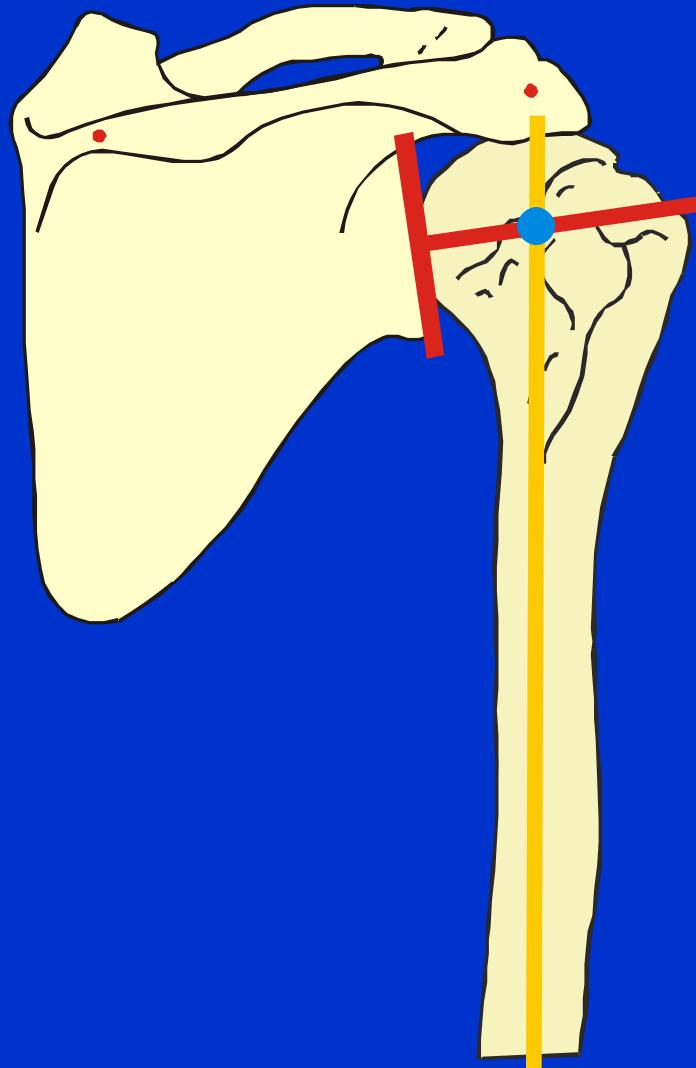


# Shoulder Motion

- Complex Motion
  - Gleno-Humeral
  - Scapulo-Thoracic
  - 2:1 Ratio
- Instantaneous Joint Center (IJC)
  - Upward Displacement



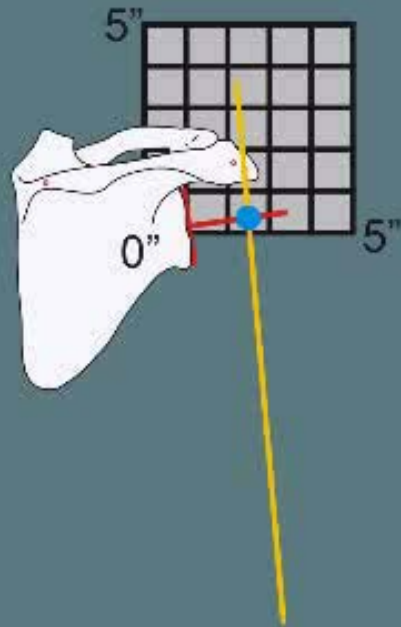
# Instantaneous Joint Center



# IJC



# IJC



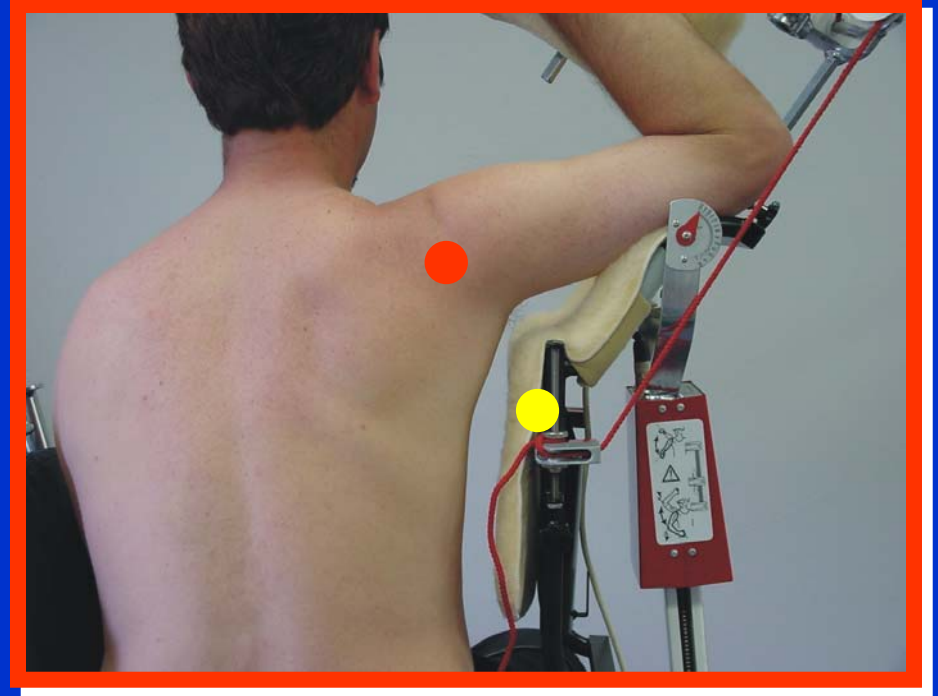
# CPM's Should .....

- Duplicate Joint Motion
  - IJC
  - Anatomical Motion
- Full Unrestricted Motion
- Functional
  - Mimic Normal Purposeful Motion



# Competitive Shoulder CPM

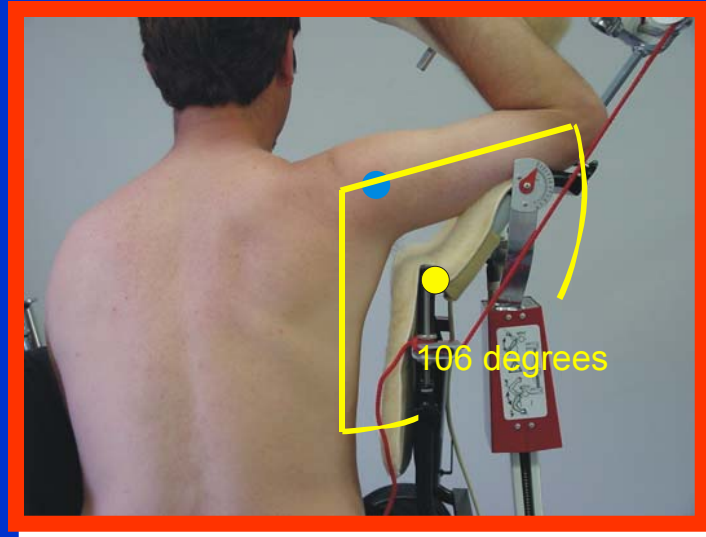
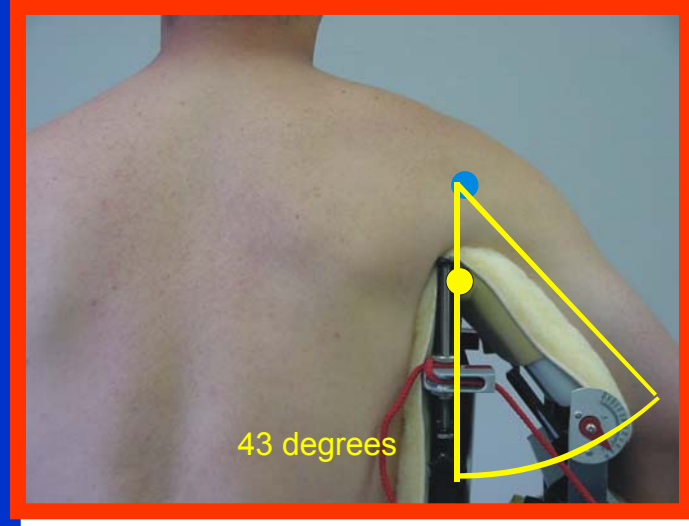
- Does NOT Meet Any of These Criteria
  - IJC Duplication
  - Full ROM
  - Functional Movement





# Competitive Shoulder CPM

- Does NOT Meet Any of These Criteria
  - IJC Duplication
  - Full ROM
  - Functional Movement



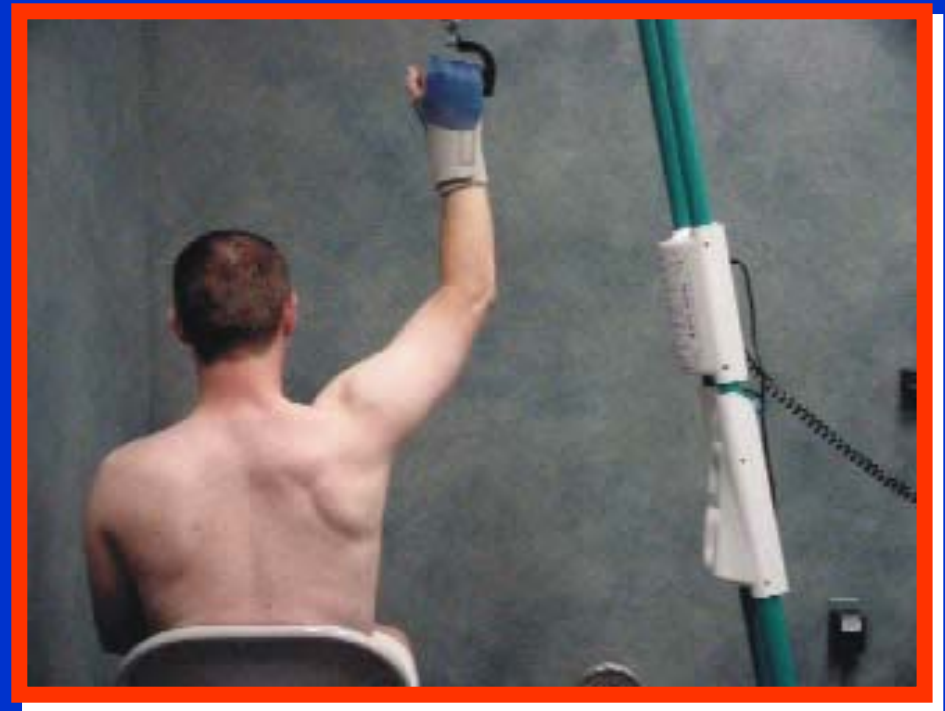
# Competitive Shoulder CPM

- Does NOT Meet Any of These Criteria
  - IJC Duplication
  - Full ROM
  - Functional Movement

**What Does  
Anyone  
Do Where They  
Abduct &  
Externally  
Rotate?**

# Flex-Mate S500

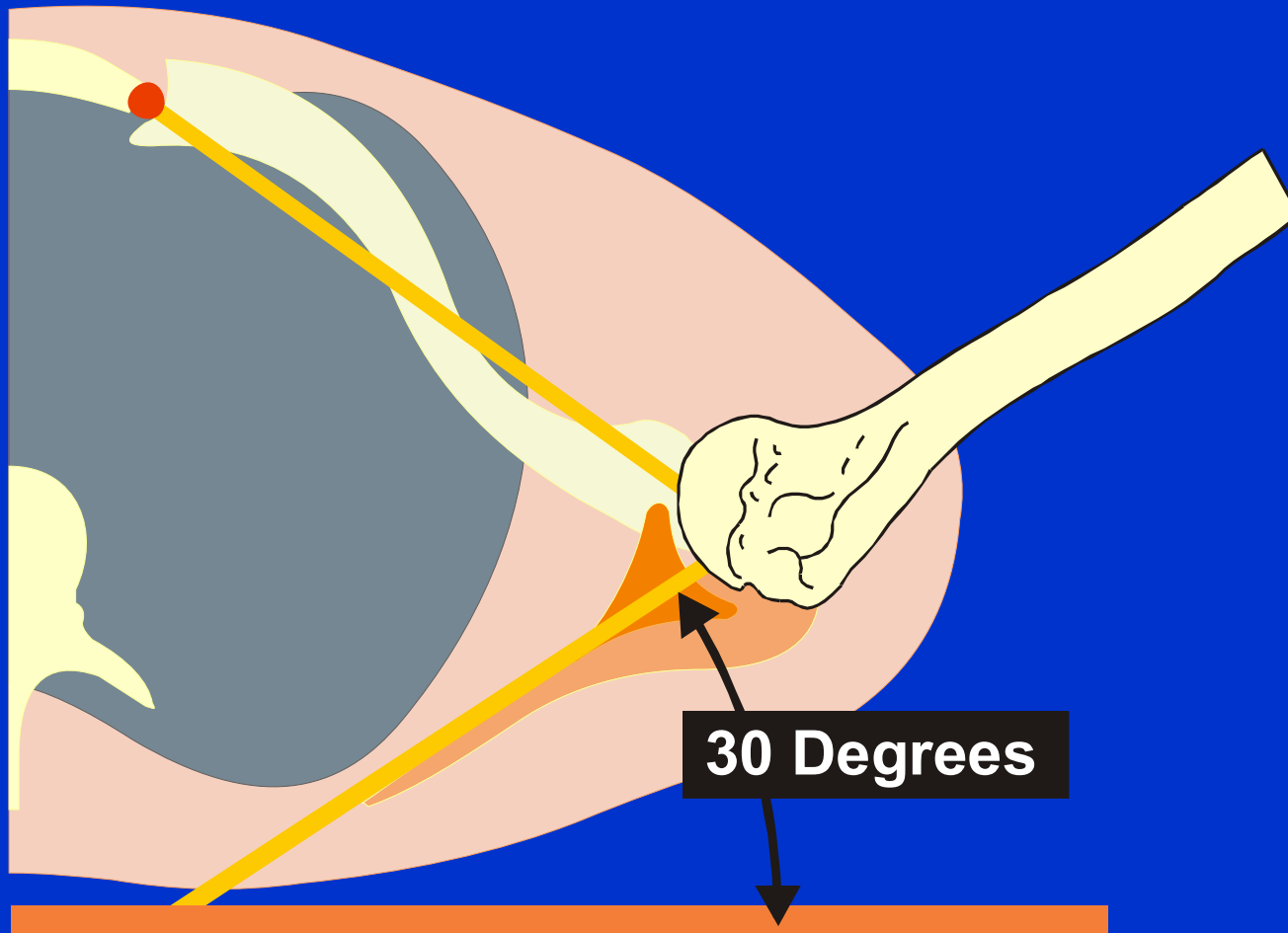
- Anatomic
  - Traction
  - NO Need to Match IJC
  - Moves Thru “The Path of Least Resistance”
  - NO Excess Stress
  - Comfortable
- Full ROM
- Functional



# Functional ROM

- Elevation
  - “Path of Least Resistance”
  - 30 Degrees Anterior of Frontal Plane
  - Scapulo-Thoracic Joint Angle
- “Automatic” External Rotation
  - Determined by:
    - Bony Anatomy
    - Ligaments & Capsule
    - Musculature

# Functional ROM



# Indications

- SAD
- SAD w/ Rotator Cuff Repair
- Total Shoulder Replacement
- S/P Lysis of Adhesions
- S/P Manipulation
- Elbow



# Alternate Application

- Patient Supine
- Under Bed
- Limited ROM
  - 90 Degrees of Elevation
- Early in Post Op Protocol
- Hospital Use





# Contact Information

**KLC Services, Inc.**  
**Corporate Head Quarters**  
**4038 Weaver Court East**  
**Hilliard, OH 43026**  
**USA**

**(866) 532 - 3534 (Free)**

**(614) 921 - 8866 (Ph)**

**(614) 921 – 8877 (Fx)**

**Mark Reep**  
**CPM Sales Mgr.**  
**mreep@klcflexmate.com**

**Kay Reep**  
**Office Mgr.**  
**kreep@klcflexmate.com**

**Website: [www.klcflexmate.com](http://www.klcflexmate.com)**

***KLC*** Services, Inc.

***KLC*** Services, Inc.